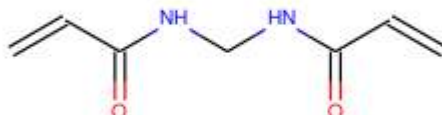


Technical Data Sheet

Item Name: Methylene-bis-Acrylamide

Structure:



CAS #: 110-29-6

Typical Physical and Chemical Properties:

Attribute	Typical Value
Appearance	White Crystal
Purity	≥98%
Water Content	≤0.5%
Color (1% Aq. Solution)	Colorless Transparent Liquid
Water Insoluble	≤0.1%
Acrylic Acid	≤0.01%